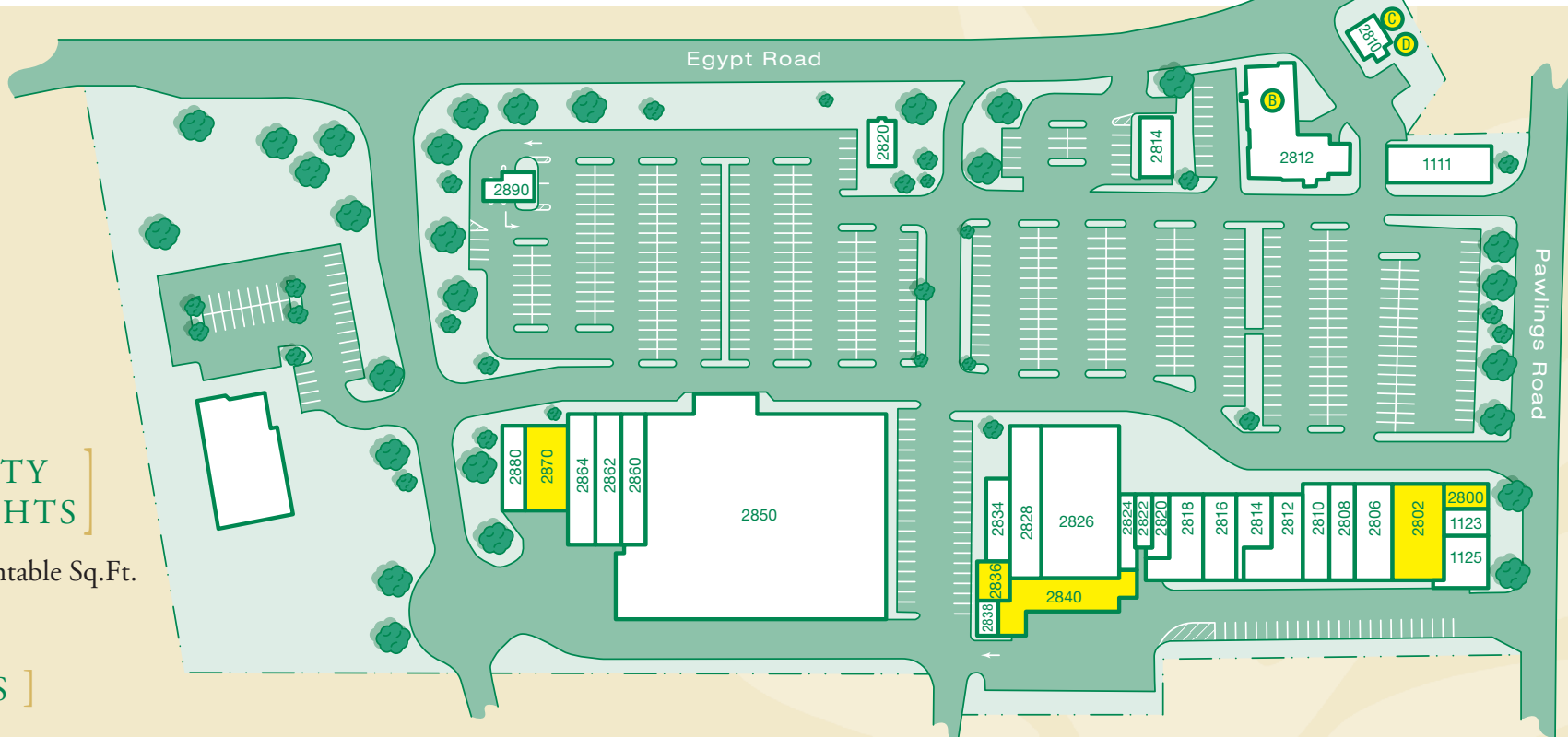


2850 Audubon Village Drive
Eagleville, Pennsylvania

Audubon Village



PROPERTY HIGHLIGHTS

+ 121,014 Rentable Sq.Ft.

TENANTS

A2800 Available (1,225 sq.ft.)	A2814 Panda Pavilion	A2826 Dollar Tree	A2850 Redner's Fresh Market	E2812A Audubon Ale House	P1125 Busy Bees
A2802 Available (3,780 sq.ft.)	A2816 Dr. Specs Optical	A2828 Soul Beat	A2860 Wine & Spirits	E2812B Available (1,750 sq.ft.)	E2810A Res Tenant
A2806 Citizens Bank	A2818 Solar Nails	A2834 Double Bubbles Laundry	A2864 Audubon Beverage	E2814 Brusters	E2810B Res Tenant
A2806B Citizens Bank Drive-up	A2820 UPS	A2836 Available (sq.ft.)	A2870 Available (3,177 sq.ft.)	E2820 State Farm	E2810C Available (750 sq.ft.)
A2808 Valley Forge Martial Arts	A2822 Tornambes Barbershop	A2838 U.S. Post Office	A2880 Elite Cleaners	P1111 PNC Bank	E2810D Available (800 sq.ft.)
A2812 Apka Bazaar	A2824 Colors of Glass	A2840 Available (2,776 sq.ft.)	A2890 Redner's Fuel	P1123 Buttercup Beads	

Audubon Village

[DEMOGRAPHICS]

	1 mile radius	3 mile radius
Population	4,101	42,268
Average Household Income	\$115,898	\$124,551

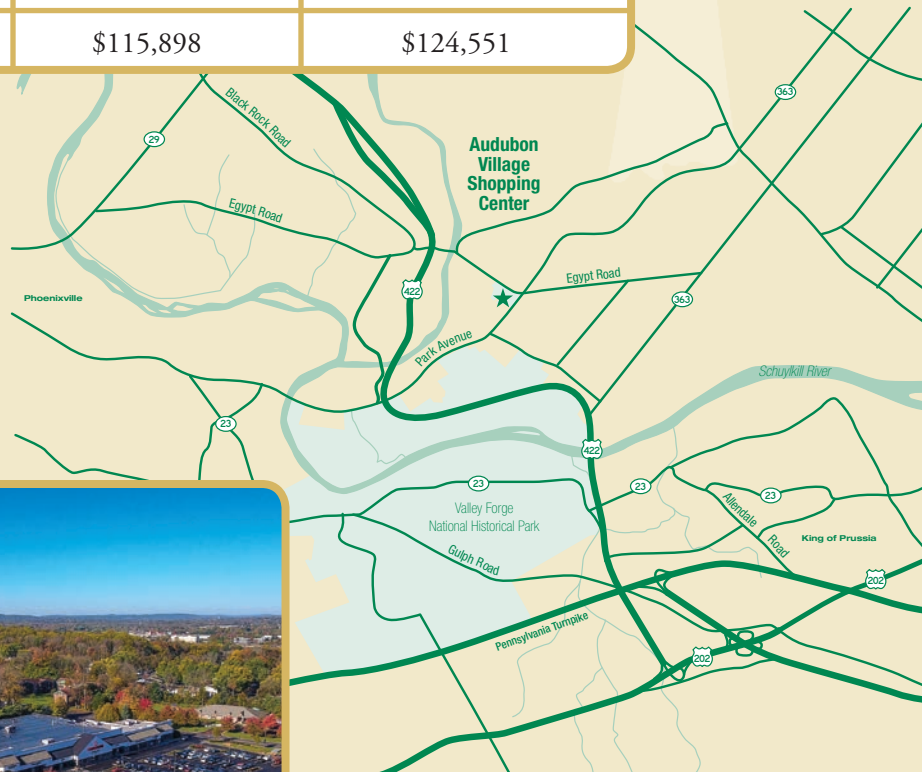


Photo courtesy of Lower Providence Township

For More Information Contact
Dave McManus
610.337.3994
dmcmanus@westovercompanies.com



Information contained herein has been obtained from the owner of the property or from sources deemed reliable. We have no reason to doubt its accuracy but make no warranty or representation. All information is submitted subject to errors, omissions, changes, withdrawal without notice and any special listing conditions of the owner.

PROFESSIONALLY  MANAGED BY

The Westover Management Companies
 550 American Ave. • Suite 1 • King of Prussia, PA 19406
 610.337.3994 phone • 610.337.2206 fax
www.westovercompanies.com