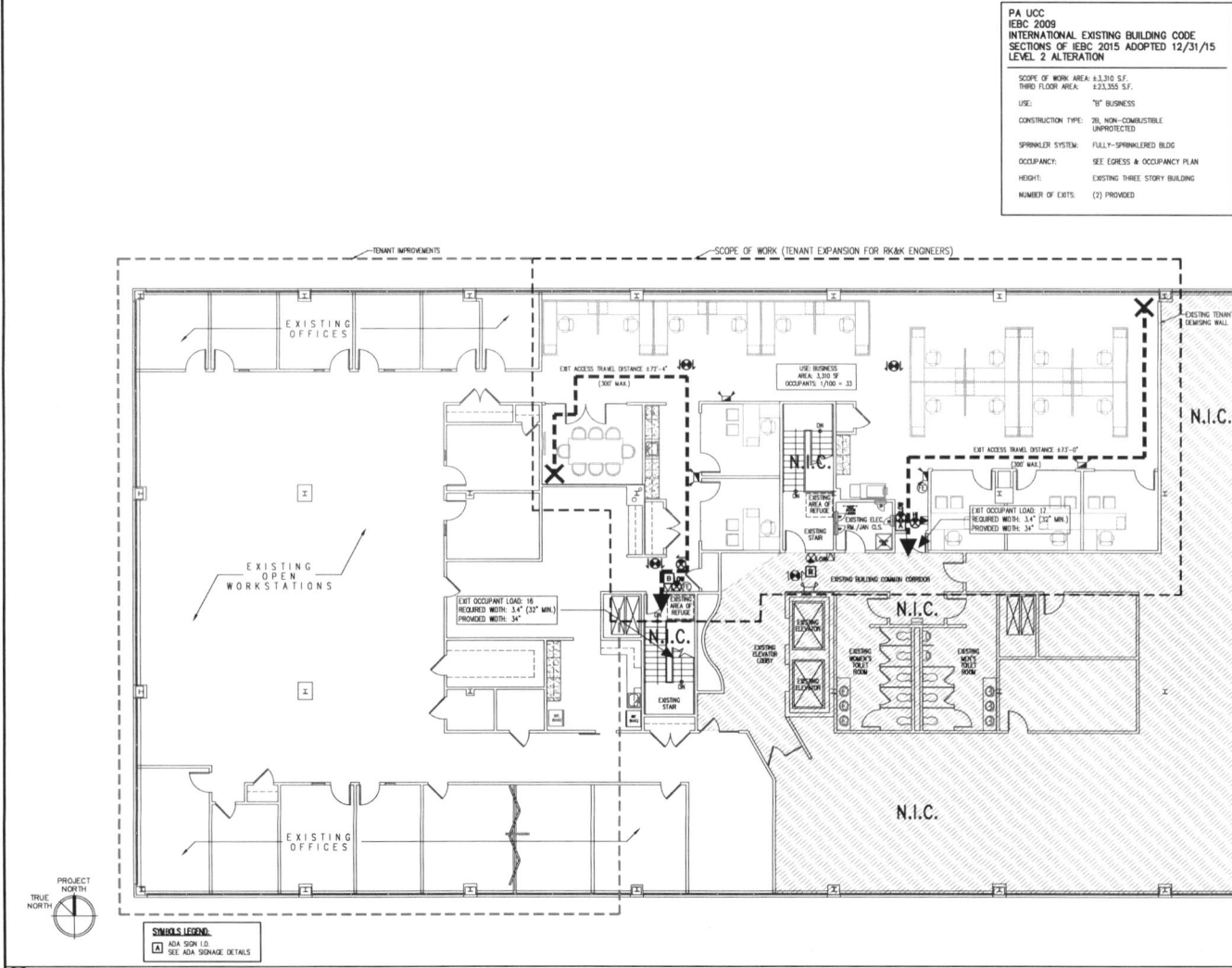


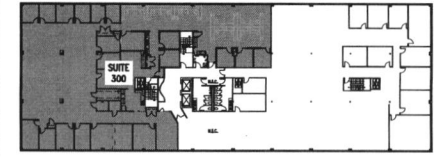
W. Westover Co. - RK&K engineers+expnsmo_680 American way, 3rd Flr, KDP, PA_2019-0059.rvt
 W. Westover Co. - RK&K engineers+expnsmo_680 American way, 3rd Flr, KDP, PA_2019-0059.rvt
 W. Westover Co. - RK&K engineers+expnsmo_680 American way, 3rd Flr, KDP, PA_2019-0059.rvt



1 FLOOR PLAN - EGRESS & OCCUPANCY

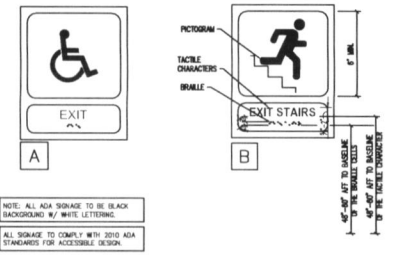
SCALE: 1/8"=1'-0"

PA UCC
 IBC 2009
 INTERNATIONAL EXISTING BUILDING CODE
 SECTIONS OF IBC 2015 ADOPTED 12/31/15
 LEVEL 2 ALTERATION
 SCOPE OF WORK AREA: 4,310 S.F.
 THIRD FLOOR AREA: 433,355 S.F.
 USE: "B" BUSINESS
 CONSTRUCTION TYPE: 2B, NON-COMBUSTIBLE
 UNPROTECTED
 SPRINKLER SYSTEM: FULLY-SPRINKLERED BLDG
 OCCUPANCY: SEE EGRESS & OCCUPANCY PLAN
 HEIGHT: EXISTING THREE STORY BUILDING
 NUMBER OF EXITS: (2) PROVIDED



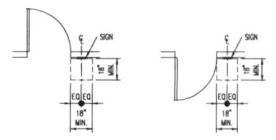
4 KEY PLAN

SCALE: NTS



3 ADA SIGNAGE LOCATION

SCALE: 3" = 1'-0"



2 ADA SIGNAGE LOCATION

SCALE: 1/4" = 1'-0"

PROPOSED TENANT EXPANSION FOR RK&K ENGINEERING:
WESTOVER COMPANIES
 680 AMERICAN WAY, 3RD FLOOR - SUITE 300
 KING OF PRUSSIA, UPPER MERION TOWNSHIP
 PENNSYLVANIA 19406



RHJ ASSOCIATES, P.C.
 ARCHITECTS - PLANNERS - DESIGNERS
 680 1ST AVE, SUITE 600
 KING OF PRUSSIA, PA 19381
 PHILADELPHIA, PA 19106
 PHILADELPHIA, PA 19106

DATE: 02-22-2019

REVISIONS

E&O

PHJ 2019-0069