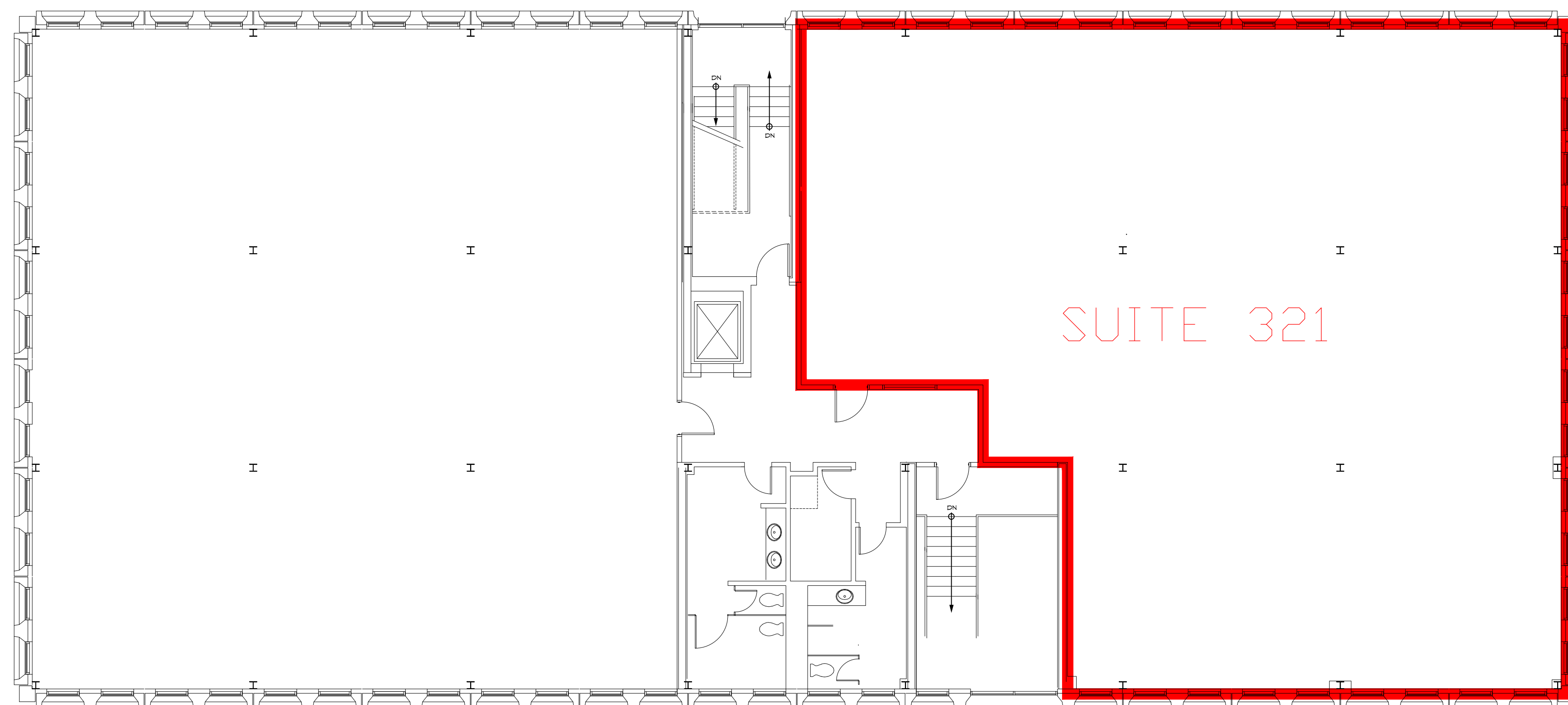


681 MOORE RD



SECOND FLOOR

REVISIONS AND NOTES:

CONTRACTOR SHALL VERIFY ALL
FIELD DIMENSIONS AND REPORT ALL
DISCREPANCIES TO THE ARCHITECT.

THIS DOCUMENT IS A COPYRIGHT
PROTECTED INSTRUMENT OF SERVICE.
PROPERTY OF C.E.HOUGH ASSOCIATES
AND IS LOANED FOR USE IN THE
TITLED PROJECT ONLY. REPRODUCTION
OR USE OF THIS DOCUMENT WITHOUT
WRITTEN AUTHORIZATION FROM
C.E.HOUGH ASSOCIATES IS PROHIBITED
AND WILL BE PROSECUTED UNDER
APPLICABLE LAW.
© 2008 - C.E.HOUGH ASSOCIATES

HOUGH
C.E. HOUGH ASSOCIATES
ARCHITECTS

1055 ANDREW DRIVE
SUITE D
WEST CHESTER, PA 19380
610.648.9400
FAX 610.648.0677
WWW.CEHOUGH.COM

EXISTING CONDITIONS
EXISTING CONDITIONS PLANS
681 MOORE ROAD
KING OF PRUSSIA, PENNSYLVANIA

☐ PRELIMINARY
☐ FOR BIDDING
☐ FOR CONSTRUCTION
PROJECT: 1046
DATE: JUNE 9, 2010
SCALE: 1/8" = 1'-0"
DRAWN: DAV
PLOT DATE:
CAD FILE:

DRAWING No.

A2.0